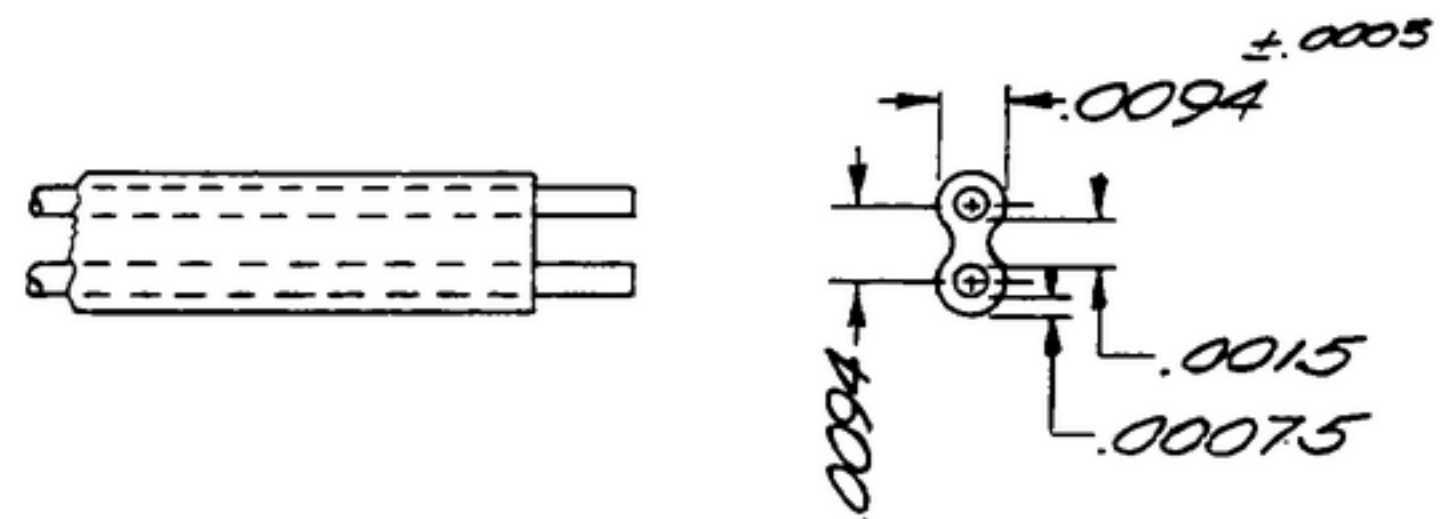


NOTICE: WHEN GOVERNMENT DRAWINGS, SPECIFICATIONS, OR OTHER DATA ARE USED FOR ANY PURPOSE OTHER THAN IN CONNECTION WITH A DEFINITELY RELATED GOVERNMENT PROCUREMENT OPERATION, THE UNITED STATES GOVERNMENT THEREBY INCURS NO RESPONSIBILITY FOR ANY OBLIGATION WHATSOEVER, AND THE FACT THAT THE GOVERNMENT MAY HAVE FORMULATED, FURNISHED, OR IN ANY WAY SUPPLIED THE SAID DRAWINGS, SPECIFICATIONS, OR OTHER DATA IS NOT TO BE REGARDED BY IMPLICATION OR OTHERWISE AS IN ANY MANNER LICENSING THE HOLDER OR ANY OTHER PERSON OR CORPORATION, OR CONFERRING ANY RIGHTS OR PERMISSION TO MANUFACTURE, USE, OR SELL ANY PATENTED INVENTION THAT MAY IN ANY WAY BE RELATED THERETO.

THIS DOCUMENT HAS BEEN PURCHASED BY THE GOVERNMENT AND MAY BE REPRODUCED AND USED IN CONNECTION WITH ANY GOVERNMENT PROCUREMENT OR MAINTENANCE OPERATION.

*FOR INFORMATION ONLY. CONTRACTOR MAY AT HIS OPTION DEVIATE FROM THESE PROCESS DETAILS.

REVISIONS			
SYM	DESCRIPTION	DATE	APPROVAL



NOTES:

1. PART MAY BE SUPPLIED BY WINSTED DIV, HUDSON WIRE CO., WINSTED, CONN, OR EQUAL, PROVIDING IT MEETS THE FOLLOWING REQUIREMENTS & DIMENSIONS SHOWN.

DESCRIPTION: DUAL CONDUCTOR COPPER MAGNET WIRE, #32 BIFILAR TAPE CONSTRUCTION.
 COMPOSITION: COPPER 99.9% MIN.
 RESISTIVITY: 10.37 OHMS PER CIRCULAR MIL-FOOT AT 20°C (68°F)
 INSULATION: DOUBLE FORMVAR ENAMEL.
 OHMS/FT AT 20°C: 0.1641
 TEST VOLTAGE BETWEEN CONDUCTORS (DC OR PEAK AC): 1000 VOLTS

COLLINS PART NO.	ITEM	QTY	PART NO.	DESCRIPTION	DATE	WRTL SPEC
LIST OF MATERIAL						COLLINS PART NO. <i>559-0310-002</i>

COLLINS NO.	QTY	NEXT ASSY	USED ON
558 0388 002		SM-B-249038	
558 0387 003	AS REQD	SM-C-249037	SC-DL-248175

DRAWN *R.A.H.* CHECKED *Rlm* APPROVED

UNLESS OTHERWISE SPECIFIED:
 DECIMAL DIMENSIONS INCLUDING HOLE SIZES MAY VARY ±.005
 FRACTIONAL DIMENSIONS INCLUDING HOLE SIZES MAY VARY ±1/64
 MACHINED ANGLES MAY VARY ±.1°
 SHEARED ANGLES MAY VARY ±.25°
 BROKEN ANGLES MAY VARY ±.1°
 ECCENTRICITY BETWEEN ANY DIAMETERS ON THE SAME CENTERLINE SHALL NOT EXCEED .010 TOTAL INDICATOR READING.
 ALL DIMENSIONS ARE FINISH DIMENSIONS INCLUDING APPLIED FINISH AND ARE GIVEN IN INCHES.

COLLINS-RADIO CO.
 CESAR-RAPID-12WA
 14214 PH
 51-93
 SIGNAL CORPS
 REVIEWED *PME*
 APPROVED *HLV*
PME
 DATE *20 JAN 56*

WIRE - MAGNET

SCALE *NONE*

DEPARTMENT OF THE ARMY
 SIGNAL CORPS ENGINEERING
 LABORATORIES
 FORT MONMOUTH NEW JERSEY
SM-B-283207